



CONTINUOUS MOTION ASSEMBLY MACHINES

Production rate:

200 - 1 000 parts/minute

12K - 60K parts/hour

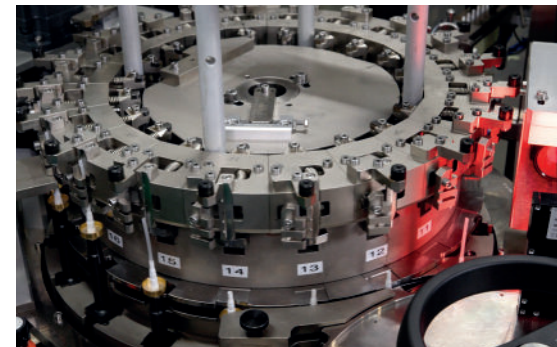
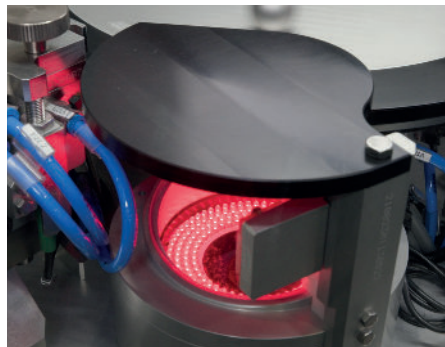
50M - 500M parts/year

Core technologies:

- Servo-driven dials
- Magnetic linear conveyor
- Levitating pallets
- Spring feeding
- Dynamic satellites to ease fragile parts feeding

Technical features & advantages:

- small footprint
- very high-speed assembly and tests
- constant speed without stops, even during tests and welding operations
- 100% in-process control
- high precision assembly
- multiple variants assembly
- clean room compatibility (ISO 7)
- pharma qualification GAMP5 and 21CFR



Processes:

- assembly
- labelling
- ultrasonic & thermal welding
- tubing
- siliconizing
- robots integration
- feeding and palletizing

Quality control:

- parts presence, geometry and colors
- characters recognition
- assembly quality and compliance
- RFID traceability

Tests:

- force measurement
- torque measurement
- leak tests
- functional tests

MEDICAL & PHARMA



PERFUME & COSMETIC



OTHER APPLICATIONS

